



TM

rectangular capabilities

CONSTRUCTION	MATERIALS	JOINT TYPES	AVAILABLE LENGTHS	GAUGES / THICKNESSES	
				MIN.	MAX.
COIL-LINE DUCT ¹ (DC)	Galvanized (G60 & G90)	TDC, S/D, DM, W, RAW	60" -See Finished Length Table	26 Ga.	18 Ga.
	Galvaneal (Paintable)	TDC, S/D, RAW	60" -See Finished Length Table	24 Ga.	18 Ga.
	Stainless Steel (304 & 316)	TDC, S/D, DM, W, RAW	60" -See Finished Length Table	24 Ga.	20 Ga.
	Aluminum (3003-H14)	TDC, S/D, DM, W, RAW	60" -See Finished Length Table	0.032	0.063
	PVC Coated	TDC, S/D, RAW	60" -See Finished Length Table	24 Ga.	18 Ga.
	Black Iron	TDC, S/D, RAW	60" -See Finished Length Table	24 Ga.	18 Ga.
PLASMA CUT STRAIGHT DUCT (DP)	Galvanized (G60 & G90)	TDC, S/D, DM, W, RAW	6" - 60" Depending on Connector	26 Ga.	10 Ga.
	Galvaneal (Paintable)	TDC, S/D, RAW	6" - 60" Depending on Connector	24 Ga.	10 Ga.
	Stainless Steel (304 & 316)	TDC, S/D, DM, W, RAW	6" - 60" Depending on Connector	24 Ga.	10 Ga.
	Aluminum (3003-H14)	TDC, S/D, DM, W, RAW	6" - 60" Depending on Connector	0.032	0.080
	PVC Coated	TDC, S/D, RAW	6" - 60" Depending on Connector	24 Ga.	18 Ga.
	Black Iron	TDC, S/D, RAW	6" - 60" Depending on Connector	24 Ga.	10 Ga.
FITTINGS	Galvanized (G60 & G90)	TDC, S/D, DM, W, RAW		24 Ga.	10 Ga.
	Galvaneal (Paintable)	TDC, S/D, RAW		24 Ga.	10 Ga.
	Stainless Steel (304 & 316)	TDC, S/D, DM, W, RAW		24 Ga.	10 Ga.
	Aluminum (3003-H14)	TDC, S/D, DM, W, RAW		0.032	0.080
	PVC Coated	TDC, S/D, RAW		24 Ga.	18 Ga.
	Black Iron	TDC, S/D, RAW		24 Ga.	10 Ga.

1. See Finished Length Table below.

COIL-LINE DUCT (DC) FINISHED LENGTH TABLE

JOINT TYPE	NOMINAL MATERIAL COIL WIDTH	FINISHED LENGTH OF COIL-LINE DUCT
TDC (Both Ends)	60"	56.25"
	48" ²	44.25"
S/DRIVE (Both Ends)	60"	59"
	48" ²	47"
DM (Both Ends)	60"	60.25"
W (Both Ends)	60"	60.25"

2. Special Order

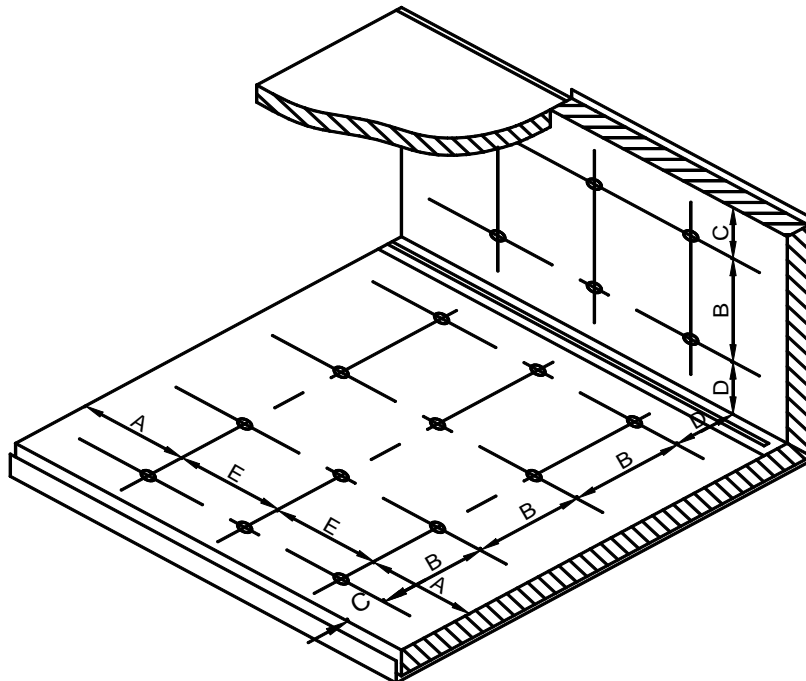
rectangular capabilities - DW/Lined

DOUBLEWALL (DW) & LINED CONSTRUCTION	OUTER SHELL MATERIALS (DW AND LINED)	INNER LINER MATERIALS (DW ONLY)	SEAMS	WALL THICKNESS	INSULATION / LINER
COIL-LINE DUCT, PLASMA DUCT AND FITTINGS	Galvanized, Galvaneal, 304 Stainless Steel, 316 Stainless Steel, Aluminum, PVC Coated & Black Iron	Perforated Galvanized Steel with 3/32" holes on 3/16" centers. (23% Open Area)	Outer Shell Seams equal to Singlewall.	1", 2" & 3" (DW)	1", 2" & 3" X 0.75 PCF UNFACED FIBERGLASS (DW)
		Solid liner available in materials equal to OUTER SHELL.	Inner Seam PITTS, SNAP or SPS	0.5", 1", 1.5" & 2" (LINED)	1.55 PCF, 2 PCF, FIBERGLASS DUCT LINER WITH PROTECTIVE COATING.

DOUBLEWALL

Rectangular Double-wall Duct and Fittings to be provided in configurations detailed in Rectangular Doublewall Section. All field connections will be TDC unless noted otherwise. Duct to be provided in standard lengths of 56.25" unless specific lengths are provided and field verified by contractor. All fittings to be provided with TDC connections unless noted otherwise. The outer pressure shell will be twice the insulation thickness larger than the inner liner dimension. The maximum thermal conductivity (k) factor is 0.27 BTU per hour per square foot per degree Fahrenheit per inch thickness (75 Degree mean ambient temperature.)

LINED



Velocity	Dimensions				
	A	B	C	E	F
0-2500 FPM (0-12.7 MPS)	3" (76.2)	12" (305)	4" (102)	6" (152)	18" (457)
2501-6000 FPM (12.7-30.5 MPS)	3" (76.2)	6" (152)	4" (102)	6" (152)	16" (406)

Liner will be installed per 1995 SMACNA HVAC Duct Construction Standards FIG. 2-19. Liner with factory applied edge coating will be used where possible (standard length, coil-line duct). Liner coating is formulated to inhibit the growth of fungus and bacteria.